



**EVOTECH PACIFIC**  
TECHNOLOGY SOLUTIONS

## Fiber Laser Marking Machine

A small yet powerful 3rd generation laser marking machine for jewellers,

# L2



# What is Fiber Laser Marking Machine, L2™?

L2 is a laser marking machine developed based on the L100 laser marking machine that has been used for a long time in the jewellery industry. The new model L2 can safely, conveniently, and quickly perform marking work that is more delicate and complex, and help with a variety of shapes, unlike general industrial marking.

Developed based on the demands and expectations raised by many jewellers for a variety of laser marking machines, L2 is a laser marking machine specialized for jewellery. It is convenient and perfect not only for jewellery factories and workshops, but also for retail jewellery shops.

Made in KOREA



## Main Features

- Optimized for jewellery
- High-speed marking on a wide range of jewellery materials and products
- Easy rotary clamp connection
- Easy to switch between the pendant/ring marking modes
- Ultra-compact size with minimal restrictions on installation space
- Chamber type structure that protects user's safety perfectly

## Uses

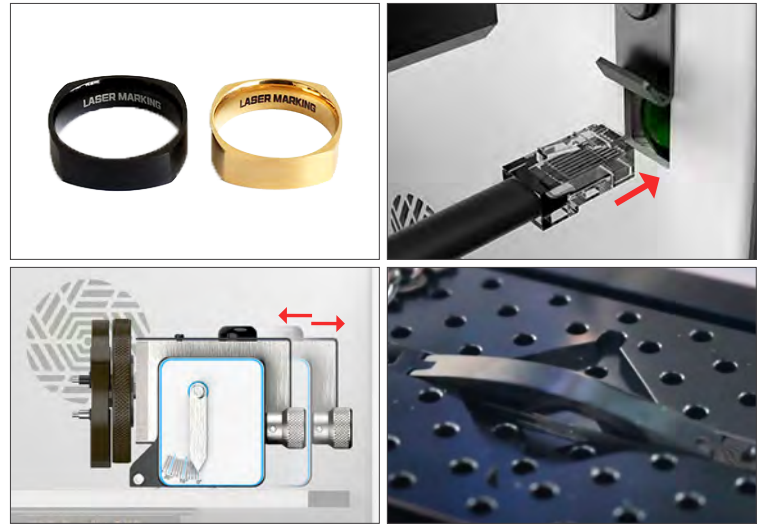
- Marking
- Black marking
- White marking
- Photo marking
- V-carving
- Cleaning



## Optimized for jewellery

L2 is a laser marking machine specialized for jewellery, and it can conveniently and quickly perform marking work that is more delicate and complex, and support a variety of shapes.

- Black marking / White marking / Deep marking
- Easy switching between pendant ↔ ring marking modes with the Push-Pull connector
- Left and right sliding rotary structure for easy marking of a ring's inner and outer surfaces
- Ergonomically designed angle adjustment knob for convenient marking of a ring's inner and outer surfaces
- Various clamps are provided for easy marking of jewellery products with complex shapes



## L2 supports the essential features for shop installations

The L2 is a laser marking machine developed for use in not only jewellery factories and workshops but also in retail jewellery shops. For this reason, it has the perfect configuration for use in jewellery shops.

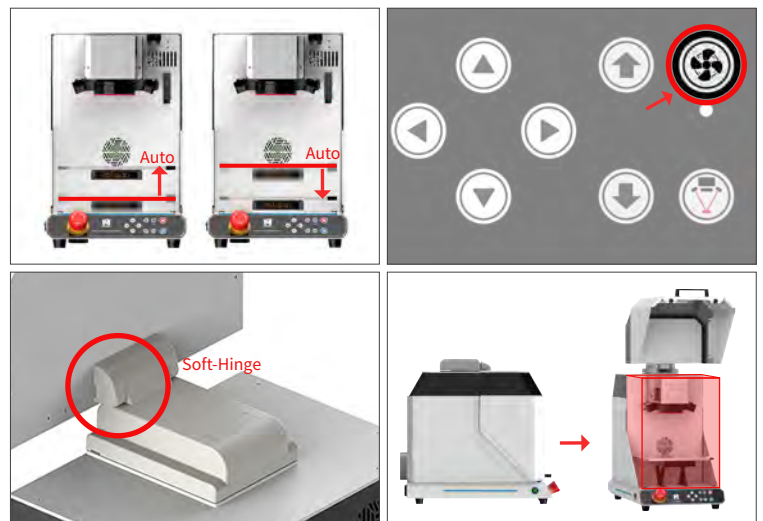
- User and space-friendly design that can fit into any retail jewellery shop
- Ultra-compact size that can be used even in a small installation space
- Silent or quiet operation with Adaptive Cooling system that operates the cooling fan only when needed



## The user-friendly features of L2 make it easy for anyone to use

With the following features, even beginners with no experience can make markings quickly and safely without mistakes.

- Easy rotary clamp connection with Push-Pull connector
- Built-in automatic function for control of plate height
- Built-in ON/OFF function for the automatic dust collector
- Built-in LED indicator for quick and easy check of device status
- Built-in Soft-Hinge to operate the safety door smoothly with little force
- Offers large open space and sufficient operating space through the upward-opening safety door



## Various markings

The L2 offers a number of convenient features to mark complex jewelry more efficiently.

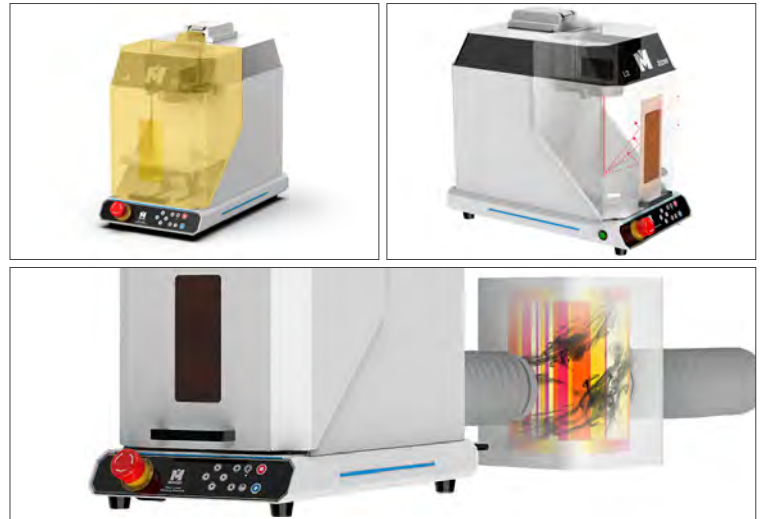
- Batch marking by multiple toolpaths by reflecting laser options of various characteristics to each tool path
- Automatic multi-step focusing marking function that automatically focuses and marks on surfaces of different heights
- Marking of curved materials such as curved bracelets
- Character-based high-speed rotary marking
- Built-in repeat marking function for easy repeat marking of the same content
- Easy and fast Magic Art 7 software provided



## L2 is optimized for a safe use environment

The laser marking machine is a convenient device, but there are some things to keep in mind to ensure safe use. L2 provides a variety of features for safe use.

- A safe device that blocks external emission of laser beams below the prescribed level (Class 1 category)
- The chamber structure has been designed to prevent external scattering of dust and the danger of laser beam
- Prevents the scattering of dust caused by the user's mistake with the automatic control function of dust collector
- Built-in eye protection window makes it possible to check the operation status of the device even without goggles.
- Built-in double safety sensor protects users from danger during laser operation



## Optional clamps

L2 is equipped with a variety of auxiliary clamps for fast and convenient work in jewelry marking and production.

### Rotary clamp

For easy marking of the inner and outer surfaces of ring/bangle



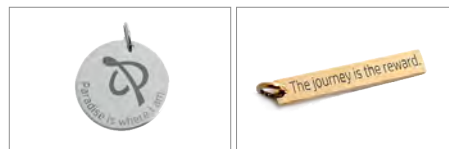
### Pendant clamp

For holding various shapes of pendants

Free-centering

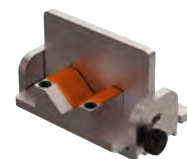


Self-centering

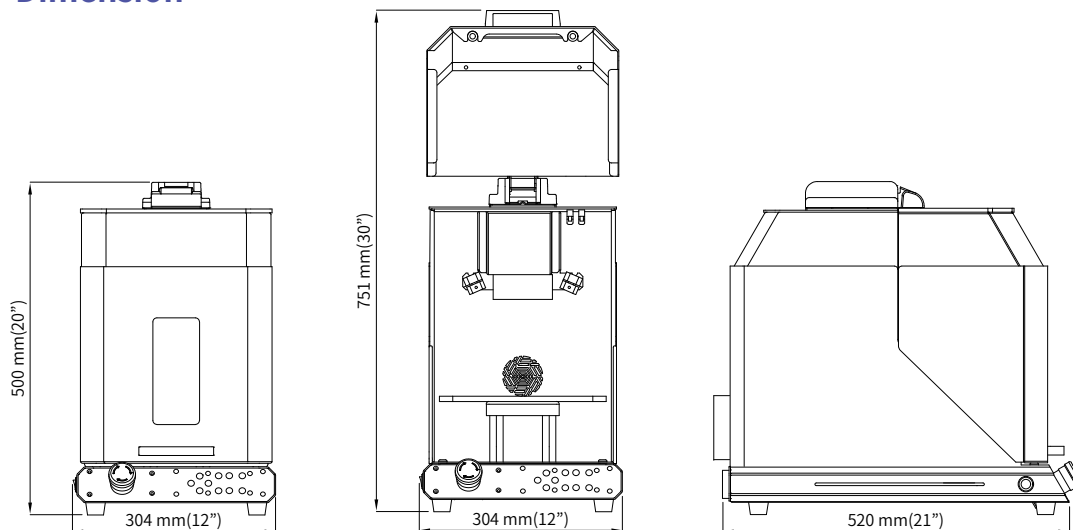


### L-type clamp

For holding a material with slanted surface in place or marking a ring manually

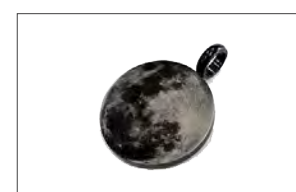
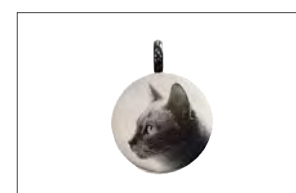


## Dimension



## Specification

Product	
Model	L2
Class	Class 1 Laser Product
Focus Laser Class	Class 2 Laser Product, <1mW
Dimension	304mm(W) x 500mm(H) x 554mm(D) (12" x 20" x 22")
Marking Area	85mm x 85mm (3.3" x 3.3")
Max Material Height	62mm (2.4")
Max Z Stroke	62mm (2.4")
Safety Door Open Height	751mm (29.6"/From base plate)
Max Material Weight	4kg (9lbs)
Weight	36kg (79lbs)
Power	100V~240V, 50Hz/60Hz
Power Consumption	290W
Cooling	Air Cooling
Temperature	0~40°
Humidity	10~85%
Laser	
Laser Source Type	Ytterbium Doped Fiber Laser
Average Output Power	20W
M <sup>2</sup>	<1.5
Maximum Pulse Energy	0.8mJ
Pulse Repetition Rate Range	25~600KHz
Pulse Width	200ns
Speed Range	4000mm/s
Wave Length	1064nm
Output Beam Diameter	7.0±0.5mm
Out power Tuning Range	0~100%
Cooling Method	Air-cooled
Polarization	Random
Anti-Reflection Protection	Yes
Built-in Guide Laser	Yes
Class (Main Source)	Class 4 Laser Product
Class (Guide Laser)	Class 2 Laser Product, <1mW



Evotech Pacific Pty Ltd

PO Box 193

Petrie QLD 4502

Australia

TEL +61 7 3889 1666

Email

-Product Enquiry

anthony@evotechpacific.com.au

